

BRIEF OUTLINE

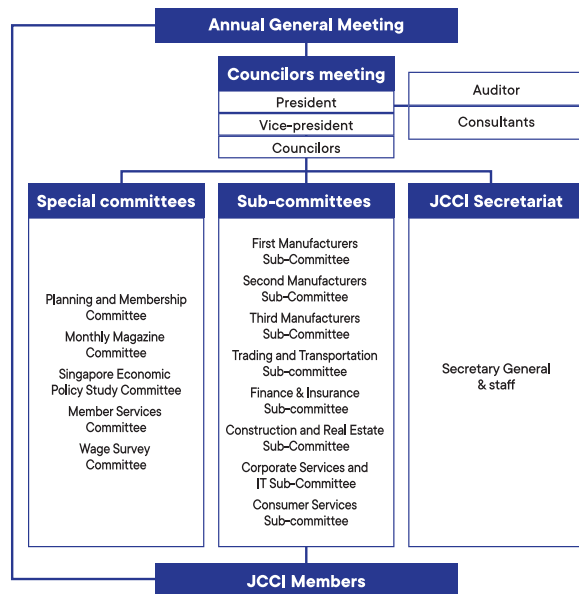
Japanese Chamber of Commerce & Industry, Singapore (JCCI)

Establishment of the Japanese Chamber of Commerce & Industry, Singapore (JCCI):
The Chamber was established in July 1969 in accordance with the Company Act of Singapore.

- Objectives :**
1. To promote economic exchanges between Japan and Singapore
 2. To contribute to the development of Japanese companies in Singapore
 3. To foster exchanges and fellowship among members

Membership Size : 777 members (714 corporate members and 63 individual members) as of January, 2023

Organization Chart



About of Sub-committees

Members are grouped based on their main business nature.

First Manufacturers Sub-Committee
Machinery (Transportation Machine & Equipment, Precision Equipment and Production Machines), Metal Engineering

Second Manufacturers Sub-Committee
Fiber, Chemical, Foodstuff, Glass, Rubber, Cement, Petroleum, Printing, Paper, Paints and other manufacturing

Third Manufacturers Sub-Committee
Electric, Machine and Apparatus

Trading and Transportation Sub-committee
General trading house, Traders for specific materials and products, Marine/Air Transportation, Inland Transportation, Warehouse, Marine surveyor

Finance & Insurance Sub-committee
Banks, Insurance, Securities, Leasing and other financial related services

Construction and Real Estate Sub-Committee
General Construction, Construction-related services, Design, Real Estates

Corporate Services and IT Sub-Committee
Telecommunications, Information technologies, Law Firms, Audit Firms, Consultants, other B to B services

Consumer Services Sub-committee
Employment Agency, Media, Hotel, Retailing, Restaurants Tourism, Public Agency, other B to C services

"Basic knowledge and recent changes in Employment Act", "Retirement and Re-employment", "The geopolitical position of ASEAN and the future business environment", "Dealing with troubles faced in overseas business: Utilizing Investment Agreements", "Into the 'Fandom' - searching for marketing Tips on why people in ASEAN are enthusiastic about Fandom", "Dialogue with Dr. Tan See Leng, Minister for Manpower"

◆ Networking Events

Network with fellow members at various big-scale events such as "New Year Party" (January) and "Year-End Party" (December).

◆ Sub-committee's Activities

Take part in exclusive sub-committee or inter-sub-committee activities such as site visits, seminars, workshops, networking events, golf and etc.

【Examples of 2022 activities】

Seminar topics: "Southeast Asian startups entering the second phase", "Examples of advanced and concrete initiatives towards carbon neutrality by Japanese companies", "Introduction to 150 years of railroad operations by the deputy director of the Railway Museum", "Team management and organizational theory in Soccer", "Singapore's Land Transport plans and policies"

Networking: "Welcome Lunch for newly relocated members and newly joined companies", "Bowling & Networking Dinner", "Networking Golf"

Site visits: "PSA Singapore port facilities", "Singapore battle-eld tour", "Singapore Feng Shui tour"

Others: "Discover your Business Partners Presentation"

◆ Business Management Consultation

Access to the free business management consultation that is held monthly basis to provide members with professional advice for business issues.

◆ Overseas Mission

Explore the overseas business opportunities by joining the observational visits to various overseas industrial parks/estates - one of major activities of JCCI Singapore.

【Past visited destinations】Israel, Sri Lanka, Nepal, Iran, Turkey, China, and other countries

◆ Advertisement and Promotion Support Service

Access to member-only business promotion services such as "E-mail Advertisement Service", "JCCI Homepage Banner Placement Service", "Labels for Direct Mail", "JCCI Membership Database Download Service" and more while "Advertisement in JCCI Monthly Magazine 'Geppo'" is open to both member and non-member.

◆ JCCI Monthly Magazine 'Geppo'

Have exclusive access to 'Geppo' which is the monthly magazine only for members that provides many interesting articles for businesses as well as introduces JCCI activities.

◆ Statistical Reports

Get first-hand survey reports on various business-related topics such as the annual wage survey that includes salary revision and bonus payment forecasts. JCCI also conducts random surveys and questionnaires on issues that Japanese companies face, such as "employment visa", "work-from-home vs work-from-office", "office and housing rent", "electricity rates" and so on.

◆ Suggestions and Requests

Be a part when JCCI gives suggestions and requests to the governments of both Singapore and Japan in striving to create a business environment conducive to the activities of JCCI member companies. JCCI also send representatives to the National Wages Council (NWC), the Singapore Business Federation (SBF), and other organizations to share and obtain business information. In addition, JCCI Singapore is part of the Federation of Japanese Chambers of Commerce and Industry in ASEAN (FJCCIA) that rallies the Japanese chambers in ASEAN to work together and collect requests from Japanese companies in ASEAN countries every year and holds a dialogue with all Secretary Generals of the ASEAN region.

JCCI Singapore Foundation Limited

Set by the Chamber, incorporated in May 1990 and registered as a Charity under Charities Act. The Foundation was established with a mission of being the corporate social responsibility channel of the Chamber to support the development of arts, culture, sports & education in Singapore.

The Foundation raises its funds through the annual fundraising campaign among JCCI member companies, and it has donated more than S\$10M to local organizations and also has provided scholarships to more than 40 students to study in Japan.

Members' Benefits

JCCI members can enjoy the following activities and services.

◆ Monthly Seminar

Get valuable information and useful knowledge from lecturers at the Monthly Seminar that is specially catered for all members.

【Examples of 2022 seminar topic】 "Relationship between Japan and Singapore", "Summary of Singapore budget 2022",

Contact us

Japanese Chamber of Commerce & Industry, Singapore

10 Shenton Way, #12-04/05 MAS Building, Singapore 079117

Tel: (65) 6221-0541 Fax: (65) 6225-6197 Email: info@jcci.org.sg

Operating hours: 9:00~12:00 • 13:00~17:00 (SGT)

Closed on Saturday, Sunday, Singapore public holidays, Year-end and New Year holidays

Website: <https://www.jcci.org.sg/>

